



SORA CLEAR WALL LIGHT

Designed and Handmade by Oliver Höglund & Ryan Roberts

The Sora wall light offers a selection of clear or captivating bubble glass finishes, creating a mesmerizing soft glow that's an ideal match for bathrooms, bedrooms, or kitchen areas. The bubble glass finish casts a unique shadow pattern, infusing walls with a captivating burst reminiscent of champagne effervescence. Easily affixed to the wall via a sleek wall plate, available in finishes like brass finish, matte black, matte white, medium bronze, or steel finish, this fixture allows you to tailor the ambience to your preference using warm, warm white, or white LED temperatures. Meticulously hand-blown using premium Swedish clear glass, each glass shade carries the distinctiveness of SOKTAS Glass designs, promising an unparalleled and personalised lighting masterpiece that adds both elegance and character to your space.

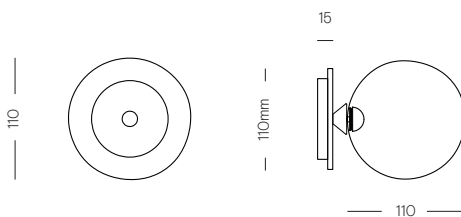
Hand-Blown in Currumbin, Australia



TECHNICAL DATA

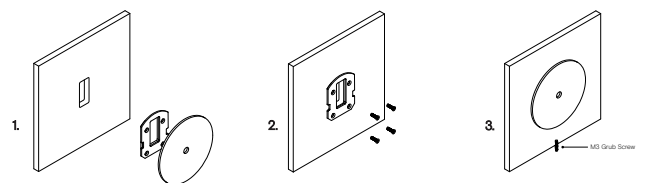
Application	Interior Use (Optional: Outdoor Use) Low Voltage (under 12v)	Input Power	100-240V AC
Glass	Clear	Output Power	4V DC Driver (350mA Constant Current) Supplied with Remote Driver
Wall Plate Finish	Matte Black / Matte White / Brass Finish / Steel Finish / Medium Bronze Powdercoat	Dedicated LED	1W - 350mA (Standard) / 2W (additional cost) Lifespan - 60,000+ Hours CRI>90
Dimensions	Glass: 110 x 110mm Mounting Plate: 110 x 15mm Protudes: 125mm	Lumen Output	150lm (1W) (Standard) / 300lm (2W)
Weight	0.5kg	Colour Temperature	2700K / 3000K (Standard) / 4000K
IP Rating	IP20 Indoor (Optional: IP55 Outdoor)	Dimming	Single-Use-1W LED Non-Dimmable (Standard) Optional: Single-use - 2W LED Triac Dimmable DALI Dimmable (additional cost) Please contact for alternative dimming options
Warranty	24 Months / 2 Years	Mounting	Integral Wall Bracket
Certification	CE / AS/NZS - 60598.2.1		

DIMENSIONS



MOUNTING

Installation Instructions



1. Prep the wall with an hole match the wall plate cutout. Secure the transformer into the wall cavity and feed the cable through the hole into the room. Connect the single electrified cable to the transformer.

2. Screw the mounting plate to the wall using appropriate fasteners for the wall substrate.

3. Fit the circular wall plate over the mounting plate and secure with the supplied M3 grub screw at the bottom of the plate.

*The transformer needs to be accessible for maintenance purposes.