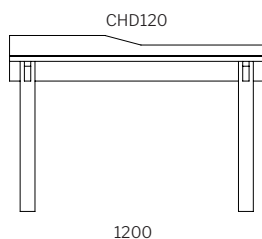


chloe.

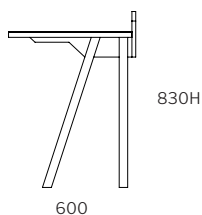


Dimensions

desk

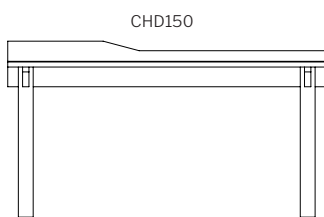


1200

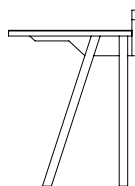


830H

600



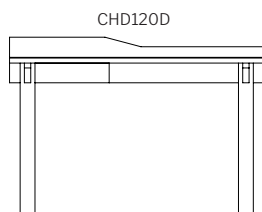
1500



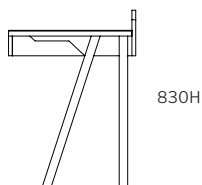
600



w/ drawer

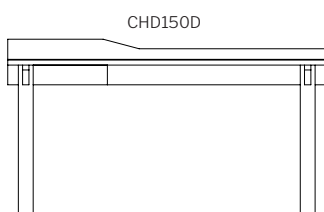


1200

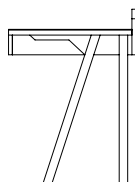


830H

600



1500



600

- : SPECIFICATION
- : Structure// Solid American Oak, Tasmanian Oak or Walnut
- : w/ clear 2pk Polyurethane coating.
- : Desktop// Forbo Linoleum on veneer substrate.
- : STAIN/UPHOLSTERY/FINISH
- : Selection of timber & linoleum colours// Customisable to include
- : cable management & modesty panel.

Click to view [Design Options!](#)

Australian Designed & Made

Studio Pip

timber.

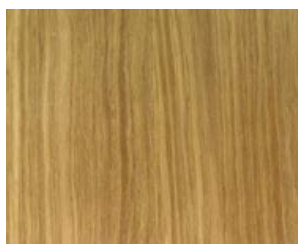
stain guide

AMERICAN OAK

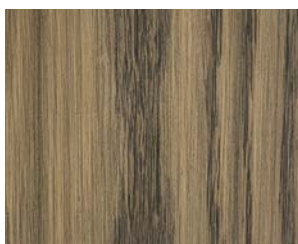
Also known as White Oak.

Appearance// Has a tight grain pattern that tends to run in a V shape. Colour is yellowish which becomes more prominent with age and light exposure. Beautiful knots & grains. Ghost Marks common. Not to be confused with European Oak.

Sustainably farmed & sourced in America.



// natural



// whiskey (stain)



// walnut (stain)



// true black (stain)

//KEEP IT AUSTRALIAN

TASMANIAN OAK

Also known as Victorian/Mountain Ash or Stringy Bark

Appearance// Ranges from very light to medium browns often with a pink hue. The grain tends to run straight and close through the timber.

All standard Studio Pip stains can be used on Tasmanian Oak

Naturally grown & sourced in Australia

//PREMIUM TIMBER

AMERICAN WALNUT

Also known as Black Walnut

Appearance// Ranges from golden to a rich chocolate brown with occasional streaks of a darker purplish brown colour. Generally straight grain with curly or wavy grain pattern.

Sustainably farmed & sourced in America.