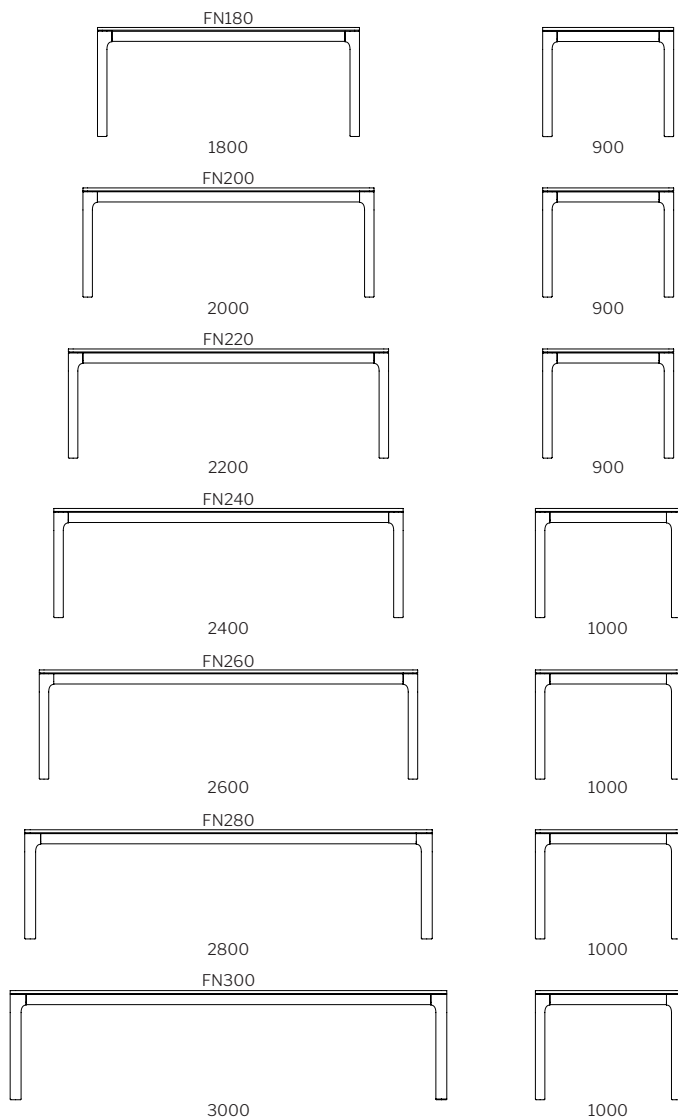


finn.



Dimensions

table
750H



- SPECIFICATION
- Structure// Solid American Oak, Tasmanian Oak or Walnut
- w/ clear 2pk Polyurethane coating.
- Range: Dining, Desk, Console & Coffee table.
- STAIN/UPHOLSTERY/FINISH
- Selection of timber stains//
- Customisable to include data box & cable management.

Click to view [Design Options!](#)

Australian Designed & Made

Studio Pip

*Please note that dimensions are approximate and can differ based on the natural expansion/contraction of timber. Dimensions exclude glides.

timber.

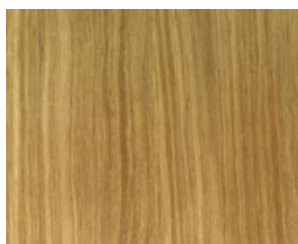
stain guide

AMERICAN OAK

Also known as White Oak.

Appearance// Has a tight grain pattern that tends to run in a V shape. Colour is yellowish which becomes more prominent with age and light exposure. Beautiful knots & grains. Ghost Marks common. Not to be confused with European Oak.

Sustainably farmed & sourced in America.



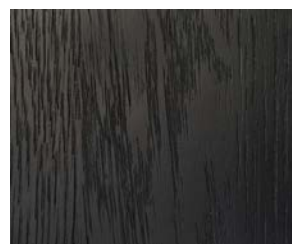
// natural



// whiskey (stain)



// walnut (stain)



// true black (stain)

//KEEP IT AUSTRALIAN

TASMANIAN OAK

Also known as Victorian/Mountain Ash or Stringy Bark

Appearance// Ranges from very light to medium browns often with a pink hue. The grain tends to run straight and close through the timber.

All standard Studio Pip stains can be used on Tasmanian Oak

Naturally grown & sourced in Australia

//PREMIUM TIMBER

AMERICAN WALNUT

Also known as Black Walnut

Appearance// Ranges from golden to a rich chocolate brown with occasional streaks of a darker purplish brown colour. Generally straight grain with curly or wavy grain pattern.

Sustainably farmed & sourced in America.