


# kaiya fabric.



## Dimensions

bed  
1020H

 <p>KABS</p> <p>1010</p>	 <p>2060</p>	
 <p>KABKS</p> <p>1160</p>	 <p>2210</p>	
 <p>KABDS</p> <p>1470</p>	 <p>2060</p>	
 <p>KABQS</p> <p>1620</p>	 <p>2210</p>	
 <p>KABKS</p> <p>1920</p>	 <p>2210</p>	

: SPECIFICATION  
: Structure//Solid American or  
: Tasmanian Oak w/ clear 2pk  
: Polyurethane coating & dual  
: slat support.  
: Bed head//Removable padded  
: panel(s).

: STAIN/UPHOLSTERY/FINISH  
: Selection of timber stains//  
: Bedhead available in fabric  
: or leather//To suit standard  
: Australian mattress sizes.

Click to view [Design Options!](#)

Australian Designed & Made

Studio Pip

# timber.

---

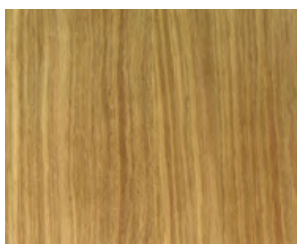
## stain guide

### **AMERICAN OAK**

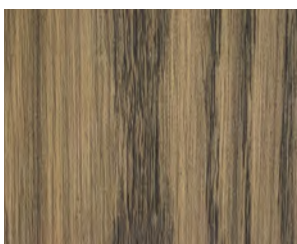
Also known as White Oak.

Appearance// Has a tight grain pattern that tends to run in a V shape. Colour is yellowish which becomes more prominent with age and light exposure. Beautiful knots & grains. Ghost Marks common. Not to be confused with European Oak.

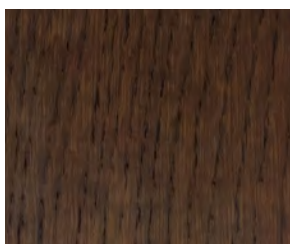
**Sustainably farmed & sourced in America.**



// natural



// whiskey (stain)



// walnut (stain)



// true black (stain)

---

//KEEP IT AUSTRALIAN

### **TASMANIAN OAK**

Also known as Victorian/Mountain Ash or Stringy Bark

Appearance// Ranges from very light to medium browns often with a pink hue. The grain tends to run straight and close through the timber.

All standard Studio Pip stains can be used on Tasmanian Oak

**Naturally grown & sourced in Australia**

---

//PREMIUM TIMBER

### **AMERICAN WALNUT**

Also known as Black Walnut

Appearance// Ranges from golden to a rich chocolate brown with occasional streaks of a darker purplish brown colour. Generally straight grain with curly or wavy grain pattern.

**Sustainably farmed & sourced in America.**