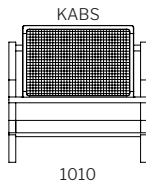


# kaiya rattan.

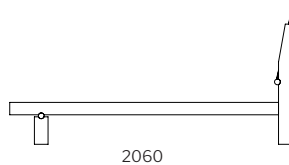


## Dimensions

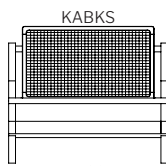
bed  
1020H



1010



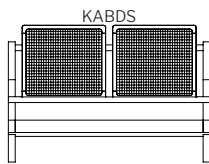
2060



1160



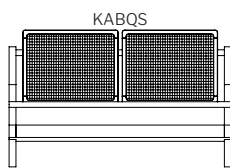
2210



1470



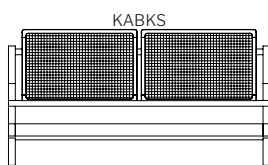
2060



1620



2210



1920



2210

SPECIFICATION  
Structure//Solid American or  
Tasmanian Oak w/ clear 2pk  
Polyurethane coating & dual  
slat support.  
Bed head//Removable padded  
panel(s).

STAIN/UPHOLSTERY/FINISH  
Selection of timber stains//  
Bedhead available in fabric  
or leather//To suit standard  
Australian mattress sizes.

Click to view [Design Options!](#)

Australian Designed & Made

Studio Pip

# timber.

---

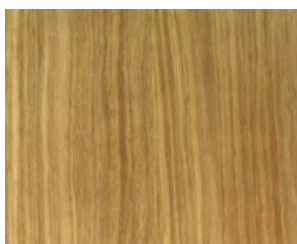
## stain guide

### **AMERICAN OAK**

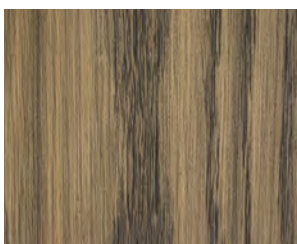
Also known as White Oak.

Appearance// Has a tight grain pattern that tends to run in a V shape. Colour is yellowish which becomes more prominent with age and light exposure. Beautiful knots & grains. Ghost Marks common. Not to be confused with European Oak.

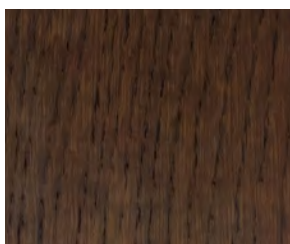
**Sustainably farmed & sourced in America.**



// natural



// whiskey (stain)



// walnut (stain)



// true black (stain)

---

//KEEP IT AUSTRALIAN

### **TASMANIAN OAK**

Also known as Victorian/Mountain Ash or Stringy Bark

Appearance// Ranges from very light to medium browns often with a pink hue. The grain tends to run straight and close through the timber.

All standard Studio Pip stains can be used on Tasmanian Oak

**Naturally grown & sourced in Australia**

---

//PREMIUM TIMBER

### **AMERICAN WALNUT**

Also known as Black Walnut

Appearance// Ranges from golden to a rich chocolate brown with occasional streaks of a darker purplish brown colour. Generally straight grain with curly or wavy grain pattern.

**Sustainably farmed & sourced in America.**