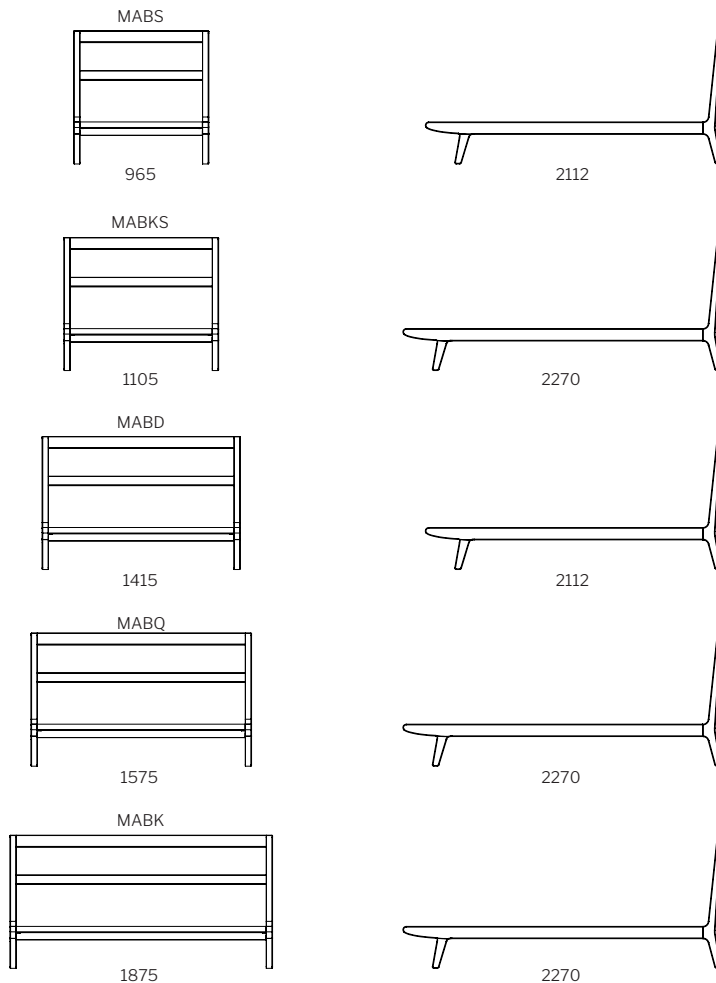


# markus.



## Dimensions

bed  
1000H



: SPECIFICATION  
 : Structure//Solid American or  
 : Tasmanian Oak w/ clear 2pk  
 : Polyurethane coating & dual  
 : slat support.  
 : Bed head// Removable cushion  
 : w/ buckle.  
 : Range//Bed & Bedside Table.

: STAIN/UPHOLSTERY/FINISH  
 : Selection of timber stains//  
 : Bedhead available in fabric  
 : or leather//To suit standard  
 : Australian mattress sizes.

Click to view [Design Options!](#)

Australian Designed & Made

Studio Pip

# timber.

---

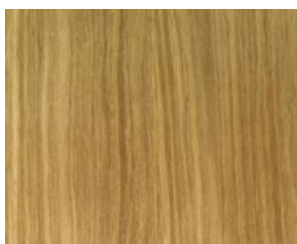
## stain guide

### **AMERICAN OAK**

Also known as White Oak.

Appearance// Has a tight grain pattern that tends to run in a V shape. Colour is yellowish which becomes more prominent with age and light exposure. Beautiful knots & grains. Ghost Marks common. Not to be confused with European Oak.

**Sustainably farmed & sourced in America.**



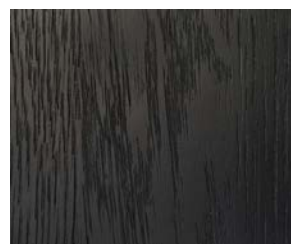
// natural



// whiskey (stain)



// walnut (stain)



// true black (stain)

---

//KEEP IT AUSTRALIAN

### **TASMANIAN OAK**

Also known as Victorian/Mountain Ash or Stringy Bark

Appearance// Ranges from very light to medium browns often with a pink hue. The grain tends to run straight and close through the timber.

All standard Studio Pip stains can be used on Tasmanian Oak

**Naturally grown & sourced in Australia**

---

//PREMIUM TIMBER

### **AMERICAN WALNUT**

Also known as Black Walnut

Appearance// Ranges from golden to a rich chocolate brown with occasional streaks of a darker purplish brown colour. Generally straight grain with curly or wavy grain pattern.

**Sustainably farmed & sourced in America.**