

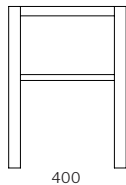
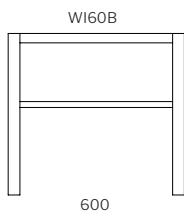
# willow.



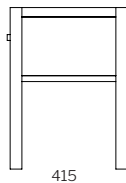
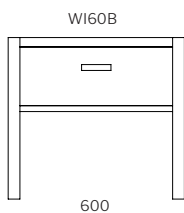
---

## Dimensions

shelf  
550H



drawer  
550H



: SPECIFICATION  
: Structure//Solid American Oak  
: or Tasmanian Oak & laminated  
: timber veneer w/ soft-close  
: runners.  
: Model//Shelf or Drawer.  
: Range//Bedside Table & Bed.  
:  
: STAIN/UPHOLSTERY/FINISH  
: Selection of timber stains//Any  
: Dulux Atlas paint colour.

Click to view [Design Options!](#)

Australian Designed & Made

Studio Pip

# timber.

---

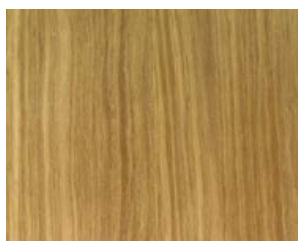
## stain guide

### **AMERICAN OAK**

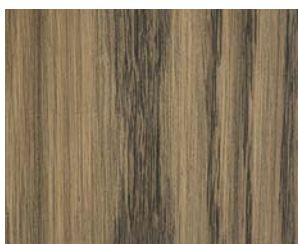
Also known as White Oak.

Appearance// Has a tight grain pattern that tends to run in a V shape. Colour is yellowish which becomes more prominent with age and light exposure. Beautiful knots & grains. Ghost Marks common. Not to be confused with European Oak.

**Sustainably farmed & sourced in America.**



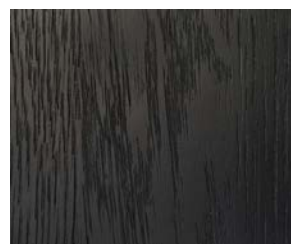
// natural



// whiskey (stain)



// walnut (stain)



// true black (stain)

---

//KEEP IT AUSTRALIAN

### **TASMANIAN OAK**

Also known as Victorian/Mountain Ash or Stringy Bark

Appearance// Ranges from very light to medium browns often with a pink hue. The grain tends to run straight and close through the timber.

All standard Studio Pip stains can be used on Tasmanian Oak

**Naturally grown & sourced in Australia**

---

//PREMIUM TIMBER

### **AMERICAN WALNUT**

Also known as Black Walnut

Appearance// Ranges from golden to a rich chocolate brown with occasional streaks of a darker purplish brown colour. Generally straight grain with curly or wavy grain pattern.

**Sustainably farmed & sourced in America.**